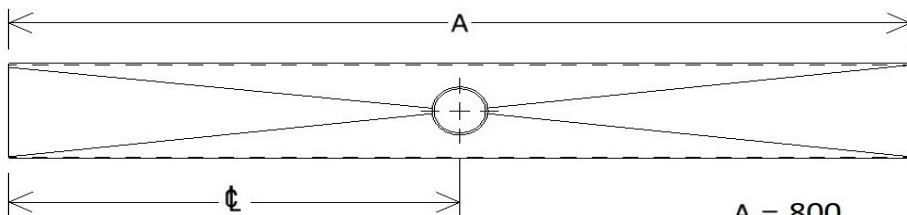
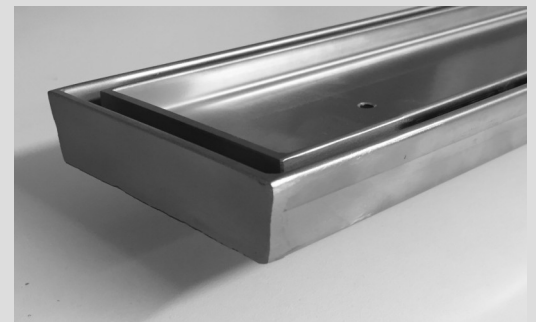
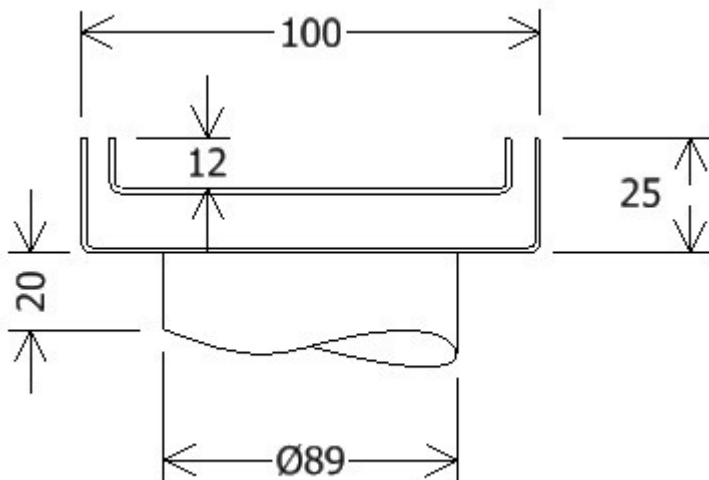


## Standard Tile Insert

STI-1200 STI-1100 STI-1000 STI-900 STI-800



A = 800  
900  
1000  
1100  
1200



Our standard Tile Insert includes sizes 800mm, 900mm, 1000mm, 1100mm, and 1200mm with a fully welded 89mm spigot to centre.

\* Please note there are no modifications to our standard Tile Insert range. Customised Tile Inserts are available on request.

Additionally they are adaptable to suit our range of quality architectural drainage systems.

### FEATURES & BENEFITS

- 2mm wall thickness
- 304 grade only
- 89mm centre spigot
- Always in stock
- Quality product at an affordable price.

For enquires, quotes or to place an order

**Call 0243224955**



Australian Owned  
& Manufactured

